

Exhaust Air Unit RA 15-60 Built-In Device

Description and functions

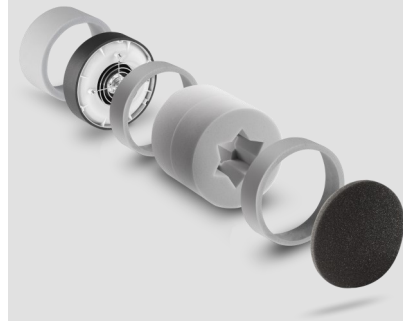
The RA 15-60 is used to ventilate functional rooms such as kitchens and bathrooms. Due to the same design, the fans e² and RA 15-60 are particularly suitable for hybrid ventilation, in which ventilation with heat recovery is combined with exhaust air technology in a cost-efficient and energy-efficient way.

The RA 15-60 is a radial fan for installation into the outer wall, which can be used for support with the e² or e²neo.

These are intended to be used in functional rooms and only to be switched on if necessary, as the exhaust air fan, in the

case of continuous operation, would pull the heat recovered by the e²/e²neo out of the thermally heated envelope.

In order to ensure user-independent ventilation according to DIN1946-6, we recommend activating an interval circuit using the relay integrated in the 5/UNI-FT. In this way, the RA 15-60 works independently (every 4 hours for 30 minutes or every 2 hours for 15 minutes and in humidity control operation) thus ensuring a constant air quality.



Installation

The built-in device is inserted into the wall-tube 9/R 160 (ø 160 mm) and with a slight incline outwards into the outer wall.

The power supply is provided via the universal control 5/UNI-FT, which is powered by a power supply unit.

The exhaust air fan is operated via the series switch 5/W2U.

Optionally, it can be connected via 5/UNI-FT to the comfort control TAC.

Please observe the installation manual and have the electrical connection of the fan performed by a qualified professional.

Accessories

Wall-tubes	500 mm 9/R160 700 mm 9/R160-700
Power supply	18 W 5/NT18 60 W 5/NT60 100 W 5/NT100
Universal control	5/UNI-FT
Series switch	5/W2U
Inner screen	9/IBE 9/IBG 9/IBK
Sound-absorbing screen	9/IBS
Wind pressure relief	9/WDS ABL
Regenerable replacement filters, Three-pack, G3	9/FIB-3R
Pollen filters, three-pack	9/FIB-P
Outer grilles, round	white 1/WE180 red-brown 1/RE180 sanded 1/BE180
Outer hoods	white 1/HWE anthracite 1/HAZ
Wall installation housing	9/MRD

Technical data

Airflow volume	15/30/45/60 m ³ /h
Voltage	12 V DC SELV
Power consumption	0,6-7,2 W
Sound power level	19,5/31,5/36,0/40,5dB (A)
Standard sound level difference	up to 46 dB
Minimum installation length	170 mm
Product data	
Brand	LUNOS
Type	RA15-60 built-in device
Order No.	039 996

Note

Products and illustrations may vary slightly.

Due to continuous product development and/or several suppliers e.g. for raw materials, colours, among other things, may vary slightly or be shown differently in brochures.

E249 04.16 EN

Editing status: April 2016